

# Model 20.66 RFID

The **Model 20.66 RFID**, based on our reliable **Series 20** Print & Apply platform, is LSI's solution for Print, Encode & Apply RFID labeling. The **Model 20.66 RFID** incorporates our unique Model 066 Reject Tamp Blow Applicator, which is designed to accommodate the 15%-20% "Bad Tag" yields, typically found with RFID labels by most label converters.

The latest RFID print engines from Zebra, Sato or Datamax can be incorporated into the **Model 20.66 RFID** to support EPC Class 1 (Alien) UHF RFID tags. Future upgrades for multi-protocol readers and Generation 2 tags will be made available as they are released by the printer manufacturers.

The **Model 20.66 RFID** labeler features:

- Bright LCD digital display, easy to read, simple menus, remote mounting available
- PLC Controls - flexible, upgradeable, I/O expansion kit available
- Adjustable product sensor delay
- Resettable product and label counters
- Throughput Rate Counter
- 50 recipe storage locations, for easy set-up and repeatable product change over
- Thermal Transfer and Direct Thermal Print Engines from Sato, Zebra or Datamax
- Serial, Parallel, USB or Ethernet Printer Interfaces
- Integrates with Label Generation Software including Label View, Easy Label, Label Matrix, Bar One and Code Soft.
- Selectable Print & Apply and Apply & Print Modes
- Selectable 1 Sensor and 2 Sensor Labeling Modes
- Dry Contact System Status Outputs
- Heavy duty aluminum plate and stainless steel construction, designed for 24 x 7 duty

### Options

- Available in Right or Left Hand Configurations (Some printer models are available right hand only)
- Low Label/Label Out/Low Ribbon/Ribbon Out Alarm Package with Beacon
- Allen Bradley PLC Controls
- 12" & 16" Diameter Unwind Assemblies
- Remote Display Mounting



### Labeling Systems Inc.

32 Spruce Street  
Oakland, NJ 07436  
Tel: (201) 405-0767  
Fax: (201) 405-1179  
Email: [LSI@LabelingSystems.com](mailto:LSI@LabelingSystems.com)  
[www.labelingsystems.com](http://www.labelingsystems.com)



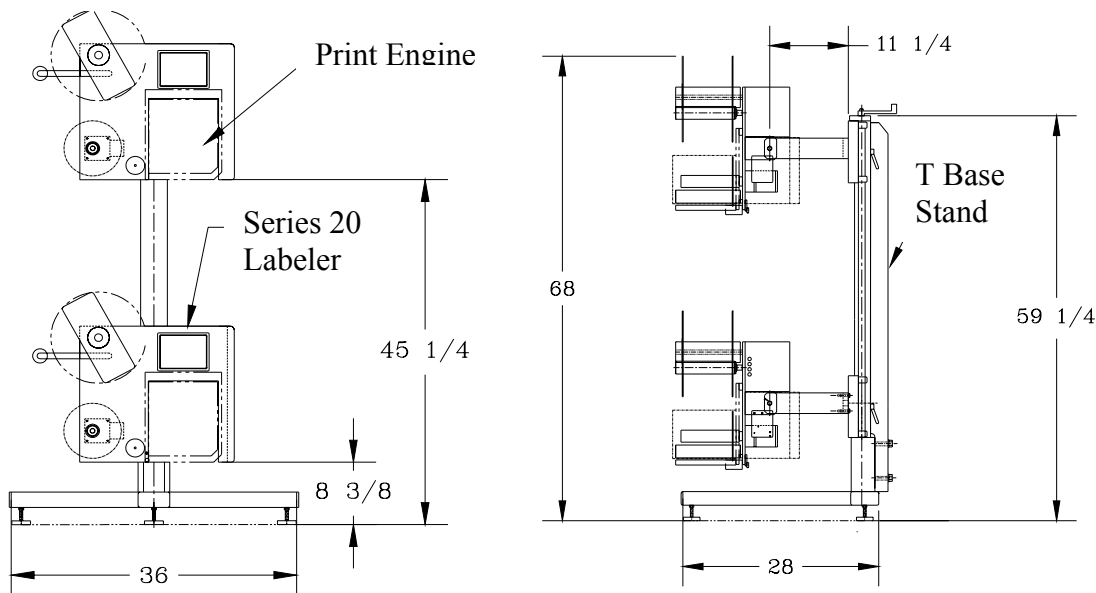
# Specifications

Print Engines						
Manufacturer*	Model	EPC Global Tag Class	Print Width	Media Width	Print Resolution DPI	Print Speed IPS
Zebra	R110PAX3	Class 1 (Alien)	4.1"	4.5"	203	12
Sato	M8485Se RFID	Class 1 (Alien)	5"	5.27"	203	12
Datamax	A 4212	Class 1 (Alien)	4.094"	4.65"	203	12

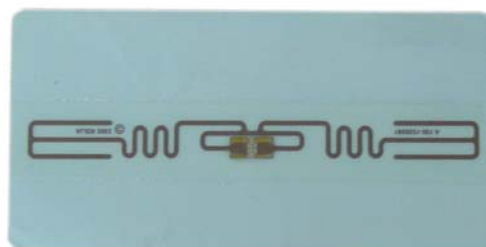
\* LSI can supply the Model 20.66 RFID with additional OEM print engine models, as they become available.

## Available Applicator Modules

All LSI RFID Labels can incorporate any of our many standard applicators. Standard applicators include Wipe-on, Vacuum Grid Roll-on, Blow-on, Tamp, Tamp/Blow, Swing Arm Tamp. Contact an LSI applications engineer for details.



**Labeling Systems Inc.**  
 32 Spruce Street · Oakland, NJ 07436  
 Tel: (201) 405-0767 Fax: (201) 405-1179  
 Email: [LSI@LabelingSystems.com](mailto:LSI@LabelingSystems.com)  
[www.labelingsystems.com](http://www.labelingsystems.com)



Typical 4" wide x 2" feed EPC class 1 RFID label

MODEL 20.66