

Tagsoft

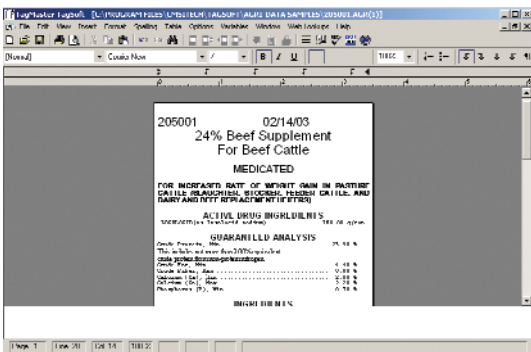
Custom Tag Design Software on a word processing platform

Softsys



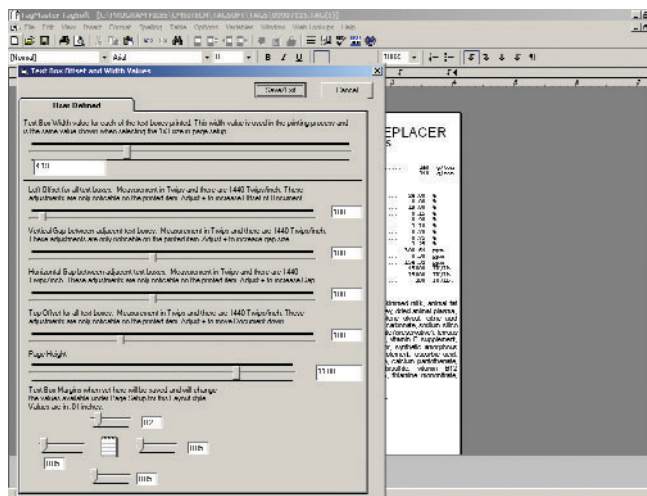
The TagSoft software applications allows you to print the output files from most nutritional / least cost programs such as Agri-Data, Format (S-label), or Brill; when these packages include their own respective tag generating program.

With TagSoft you can load the file and have it formatted automatically with respect to fonts, font size, or style. Based upon the special code system available with Agri-Data and Brill, specific areas of the tag or label can be consistently formatted the same. In the case of Format, a "Fuzzy Logic" software algorithm produces the tag similar to the Agri-Data tag.



Tagsoft data import screen

The loading is simple, merely requiring the clicking on the file name. Once loaded, the file looks just like a word processor file. TagSoft can spell check your document with the 150,000 word dictionary (an optional medical dictionary is available). Additionally, graphic files can be loaded and inserted in a variety of ways, and they do not have to be positioned by spaces. They can be located by dragging around the graphic with the text automatically flowing around the object. Once the file is manipulated on the screen to your satisfaction, it can be printed on the Windows printer of your choice. The appropriate driver for laser printers or Thermal Transfer printers must be available on the system.



Tagsoft page setup screen

Following printing, the file can be saved in its own native format, transmitted over a WAN for printing at another location, or deleted to insure that a new output from the nutritional program is used. Barcode fonts and graphic barcode images are available as an option.

Tag stock die cut to common configurations is available in sheet form, and if you desire to print through a Thermal Transfer printer, the appropriate roll stock and ribbon is available. Multiple colors are available to assist you with your needs to satisfy your customers specific specifications. Once printed, the tags just snap apart eliminating costly hand cutting. Visit us online or call for a free demo program and samples.



cmsi Technologies

Labelmart Tagmaster Systems Softsys

www.cmsitechnologies.com

11733 95th Avenue North, Maple Grove, MN 55369
Phone: 763-493-0099 Fax: 763-493-0093
email: info@cmsitechnologies.com



Features



System Requirements:

PC Windows

About CMSI Technologies

Founded in 1976 to provide the meat and poultry industries with weigh, print and labeling solutions, the organization has evolved to include 3 divisions that are strategically aligned to provide customers a single source print/label/tag solution. **Tagmaster Systems** is the machinery division that provides innovative tag and labeling hardware and automation systems. **Labelmart** is the tag and label manufacturing division that focuses on providing unique solutions for thermal printing transfer applications for both low-end and high-end users. In addition to custom label design and printing, Labelmart also provides blank label stock, thermal transfer printer ribbons, and other consumables to meet the needs of thermal printing customers. **Softsys** is the software division that provides tag and label users with the technology to systematically automate, customize and support their in house label and tag producing systems.

Feature	TagSoft Standard	TagSoft Enterprise
Loads Graphics	Yes	Yes
Loads Graphics File	Yes	Yes
Imports Brill Text Output Files	Yes	Yes
Imports Agri-Data Output Files	Yes	Yes
Imports Format Files	Yes	Yes
Formats as it Loads an Output File	Yes	Yes
Permits Individual Pre-selection of formatting specifications for each section of the tag or label being imported	Yes	Yes
Text Justification (margins flat both sides)	Yes	Yes
Right, Left, Center Formatting	Yes	Yes
Allows Table Insertion		Yes
Connects to Internet for Medical lookup of description and specifications		Yes
Connects to Internet for Animal Lookup		Yes
Spell Checker Standard	Yes	Yes
Spell Checker Medical	Yes	Yes
Table Insertion/Individual Formatting	Yes	Yes
Bullets, Numbers & Letter Sections	Yes	Yes
Text Rotation to any Angle & Insertion with Text Flow Around		Yes
Tab Character Replacement	Yes	Yes
Immediate Multi-Page Setup—Formats up to 3 across x 2 down and single width	Yes	Yes
Formats to 1 inch wide for Thermal Transfer Printers	Yes	Yes
Find/Replacement Function	Yes	Yes
Headers/Footers	Yes	Yes
Barcode Generator	Yes	Yes
Special Variable Insertion for Tagmaster 2000 System Variables	Yes	Yes
Files Loaded or saved *.txm, *.doc, *.bmp, *.wmf, *.jpg, *.gif (special)	Yes	Yes
Cut/Past Function	Yes	Yes
Supplied with Thermal Transfer Printer Driver	Yes	Yes
Interfaces with Tagmaster 2000 System	Yes	Yes
Functions like a text word processing program	Yes	Yes